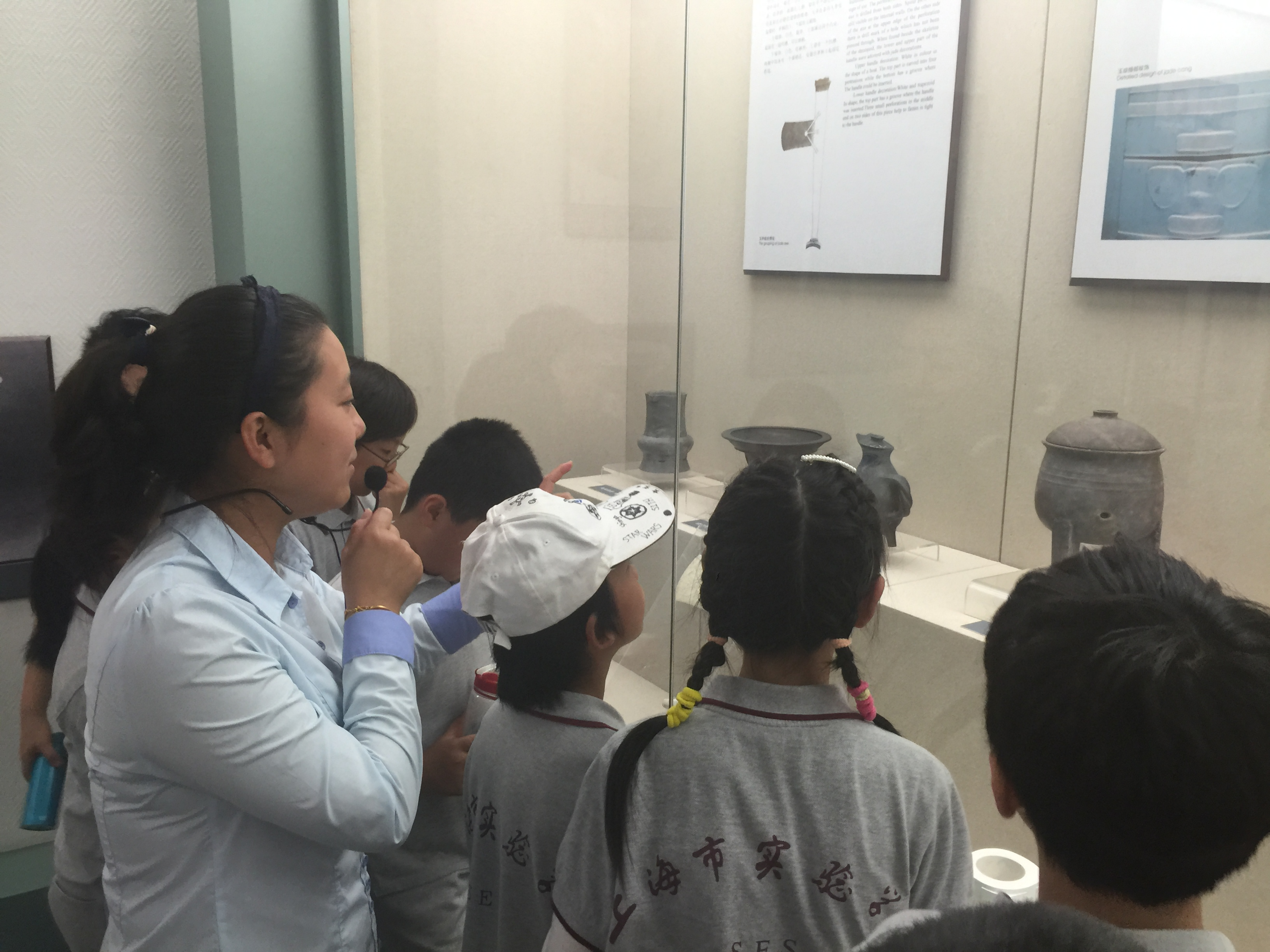


... of the ... The perforations ...
... on the ... The perforations ...
... on the ... The perforations ...
... on the ... The perforations ...
... on the ... The perforations ...
... on the ... The perforations ...
... on the ... The perforations ...
... on the ... The perforations ...
... on the ... The perforations ...
... on the ... The perforations ...





Informational panel with text and a small image of a blue object.

Informational panel with text and a small image of a blue object.

Informational panel with a circular diagram and text.

Informational panel with a circular image and text.

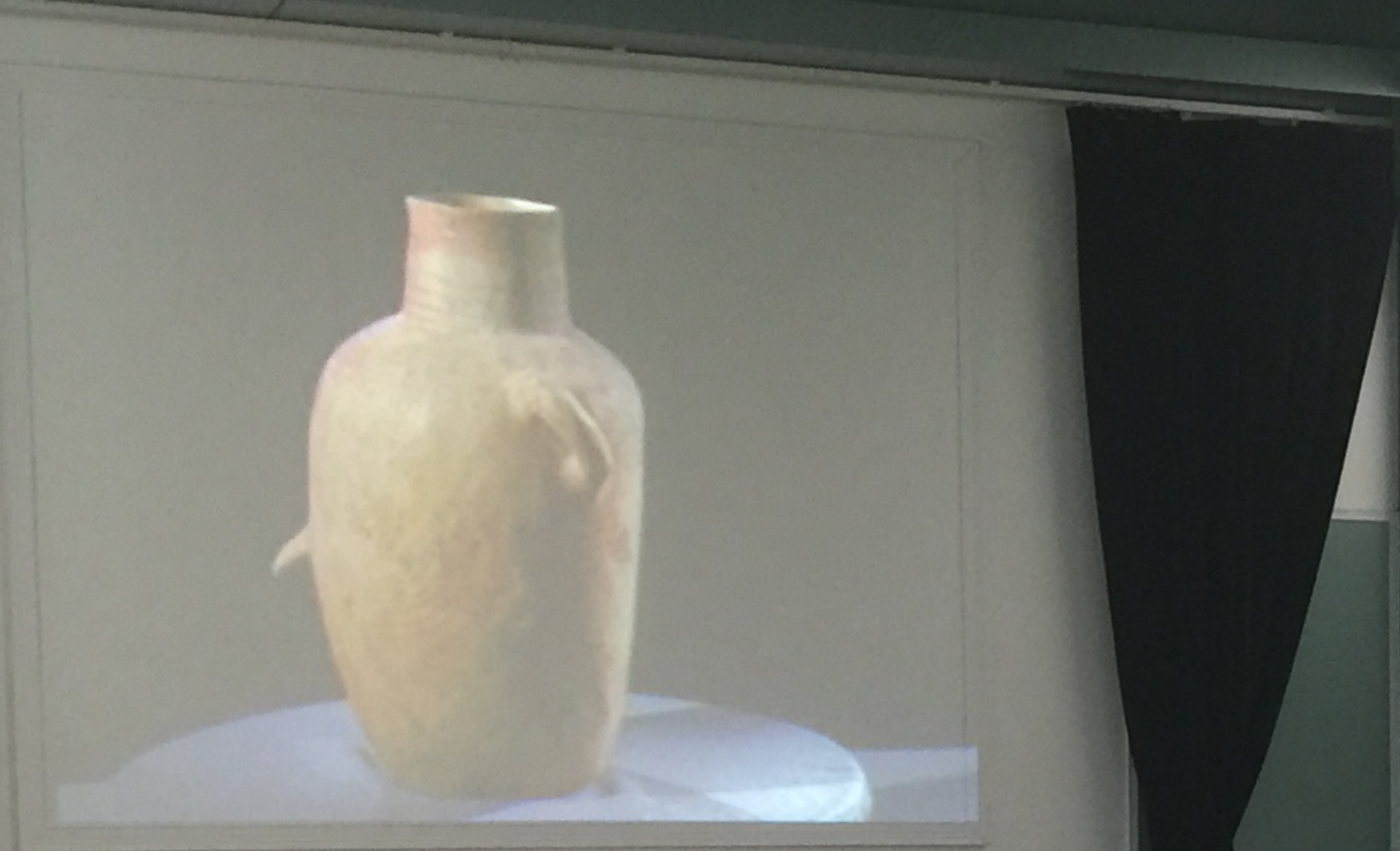
Informational panel with diagrams of a teapot and a vase, and text describing their design.

Back of a child's grey uniform with Japanese characters and 'SES'.

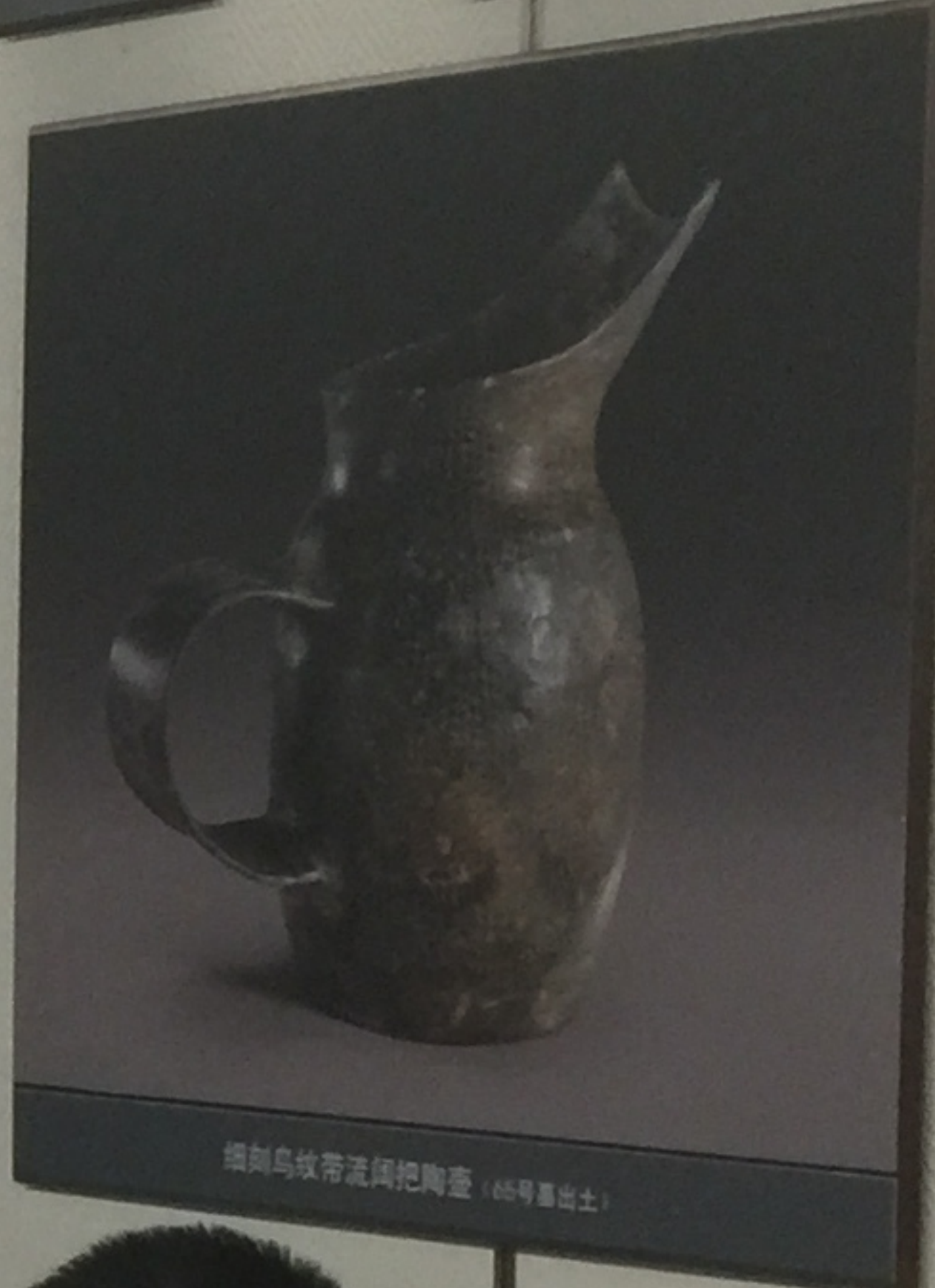
Back of a child's grey uniform with Japanese characters and 'SES', and a red backpack with 'Mel City'.

Back of a child's grey uniform with Japanese characters and 'SES'.

Back of an adult's light blue shirt.



白陶罐 (2000年前出土)



粗制鸟纹带流纹把陶壶 (6500年前出土)



侈孔陶豆 (2000年前出土)



大口陶尊 (2000年前出土)



侈孔陶豆 (2000年前出土)



大口陶尊 (2000年前出土)



大汶口文化彩陶尊



陶熏炉 (7400年前)

Students in grey uniforms are seated on a bench, looking towards a large projection of a white ceramic jar. One student is pointing at the projection. A teacher or guide is standing near the projection, holding a water bottle. The room is dimly lit, with spotlights highlighting the artifacts and the projection.





